

# Camlock Fittings



**Type A**



**Type B**



**Type C**



**Type D**



**Type DC**



**Type DP**



**Type E**



**Type F**

Cam & Groove Fittings

### Dixon Type DC Dust Caps



dust cap

Size	356T6 Aluminum	Aluminum Hard Coat	Brass
½"	<b>50-DC-AL</b>	---	<b>50-DC-BR</b>
¾"	<b>75-DC-AL</b>	---	<b>75-DC-BR</b>
1"	<b>100-DC-AL</b>	---	<b>100-DC-BR</b>
1½"	<b>150-DC-AL</b>	<b>150-DC-ALH</b>	<b>150-DC-BR</b>
2"	<b>200-DC-AL</b>	<b>200-DC-ALH</b>	<b>200-DC-BR</b>
2½"	<b>250-DC-AL<sup>2</sup></b>	---	---
3"	<b>300-DC-AL</b>	<b>300-DC-ALH</b>	<b>300-DC-BR</b>
4"	<b>400-DC-AL</b>	<b>400-DC-ALH</b>	<b>400-DC-BR</b>
5"	<b>500-DC-AL</b>	---	<b>500-DC-BR</b>
6"	<b>600-DC-AL</b>	<b>600-DC-ALH</b>	---
8"	<b>800-DC-AL<sup>1</sup></b>	---	---

### Boss-Lock Type H Dust Caps



dust cap

Size	356T6 Aluminum		Brass	
	Part	#	Part	#
¾"	---	---	---	---
1"	<b>AH100</b>	---	<b>BH100</b>	---
1¼"	<b>AH125</b>	---	<b>BH125</b>	---
1½"	<b>AH150</b>	---	<b>BH150</b>	---
2"	<b>AH200</b>	---	<b>BH200</b>	---
2½"	<b>AH250</b>	---	<b>BH250</b>	---
3"	<b>AH300</b>	---	<b>BH300</b>	---
4"	<b>AH400</b>	---	<b>BH400</b>	---
6"	<b>AH600</b>	---	<b>BH600</b>	---
8"	<b>AH800<sup>1</sup></b>	---	---	---

### EZ Boss-Lock Type H Dust Caps



dust cap

Size	356T6 Aluminum		Brass	
	Part	#	Part	#
¾"	---	---	---	---
1"	<b>AH100EZ</b>	---	<b>BH100EZ</b>	---
1¼"	---	---	---	---
1½"	<b>AH150EZ</b>	---	<b>BH150EZ</b>	---
2"	<b>AH200EZ</b>	---	<b>BH200EZ</b>	---
2½"	<b>AH250EZ</b>	---	---	---
3"	<b>AH300EZ</b>	---	<b>BH300EZ</b>	---
4"	<b>AH400EZ</b>	---	---	---
6"	<b>AH600EZ</b>	---	---	---

Cam & Groove Fittings

**Dixon / Boss-Lock Type A Adapters**



female NPT x male adapter

	356T6 Aluminum	Aluminum Hard Coat	Brass
Size	Part#	Part#	Part#
1/2"	50-A-AL <sup>2</sup>	---	50-A-BR
3/4"	7550-A-AL <sup>2</sup>	---	7550-A-BR
3/4"	75-A-AL <sup>2</sup>	---	75-A-BR
1"	100-A-AL <sup>2</sup>	---	100-A-BR
1 1/4"	125-A-AL	---	125-A-BR
1 1/2"	150-A-AL	150-A-ALH	150-A-BR
2"	200-A-AL	200-A-ALH	200-A-BR
2 1/2"	250-A-AL	---	250-A-BR
3"	300-A-AL	300-A-ALH	300-A-BR
4"	400-A-AL	400-A-ALH	400-A-BR
5"	500-A-AL	---	500-A-BR
6"	600-A-AL	600-A-ALH	600-A-BR
8"	800-A-AL <sup>1</sup>	---	---
8"	801-A-AL <sup>1</sup>	---	---

**Dixon / Boss-Lock Type E Adapters**



male adapter x hose shank

	356T6 Aluminum	Aluminum Hard Coat	Brass
Size	Part#	Part#	Part#
1/2"	50-E-AL	---	50-E-BR
3/4"	7550-E-AL	---	---
3/4"	75-E-AL	---	75-E-BR
1"	100-E-AL	---	100-E-BR
1 1/4"	125-E-AL	---	125-E-BR
1 1/2"	150-E-AL	150-E-ALH	150-E-BR
2"	200-E-AL	200-E-ALH	200-E-BR
2 1/2"	250-E-AL	---	250-E-BR
3"	300-E-AL	300-E-ALH	300-E-BR
4"	400-E-AL	400-E-ALH	400-E-BR
5"	500-E-AL	---	---
6"	600-E-AL	600-E-ALH	600-E-BR
8"	800-E-AL <sup>1</sup>	---	---
8"	BB01-E-AL <sup>1</sup>	---	---

Cam & Groove Fittings

**Dixon / Boss-Lock Type A Adapters**



female NPT x male adapter

	356T6 Aluminum	Aluminum Hard Coat	Brass
Size	Part#	Part#	Part#
1/2"	50-A-AL <sup>2</sup>	---	50-A-BR
3/4"	7550-A-AL <sup>2</sup>	---	7550-A-BR
3/4"	75-A-AL <sup>2</sup>	---	75-A-BR
1"	100-A-AL <sup>2</sup>	---	100-A-BR
1 1/4"	125-A-AL	---	125-A-BR
1 1/2"	150-A-AL	150-A-ALH	150-A-BR
2"	200-A-AL	200-A-ALH	200-A-BR
2 1/2"	250-A-AL	---	250-A-BR
3"	300-A-AL	300-A-ALH	300-A-BR
4"	400-A-AL	400-A-ALH	400-A-BR
5"	500-A-AL	---	500-A-BR
6"	600-A-AL	600-A-ALH	600-A-BR
8"	800-A-AL <sup>1</sup>	---	---
8"	801-A-AL <sup>1</sup>	---	---

**Dixon / Boss-Lock Type E Adapters**



male adapter x hose shank

	356T6 Aluminum	Aluminum Hard Coat	Brass
Size	Part#	Part#	Part#
1/2"	50-E-AL	---	50-E-BR
3/4"	7550-E-AL	---	---
3/4"	75-E-AL	---	75-E-BR
1"	100-E-AL	---	100-E-BR
1 1/4"	125-E-AL	---	125-E-BR
1 1/2"	150-E-AL	150-E-ALH	150-E-BR
2"	200-E-AL	200-E-ALH	200-E-BR
2 1/2"	250-E-AL	---	250-E-BR
3"	300-E-AL	300-E-ALH	300-E-BR
4"	400-E-AL	400-E-ALH	400-E-BR
5"	500-E-AL	---	---
6"	600-E-AL	600-E-ALH	600-E-BR
8"	800-E-AL <sup>1</sup>	---	---
8"	BB01-E-AL <sup>1</sup>	---	---

Cam & Groove Fittings

## Dixon Type C Couplers



female coupler x hose shank

Size	356T6 Aluminum		Aluminum Hard Coat		Brass	
	Part #		Part #		Part #	
1/2"	<b>50-C-AL</b>		---		<b>50-C-BR</b>	
3/4"	<b>75-C-AL</b>		---		<b>75-C-BR</b>	
1"	<b>100-C-AL</b>		---		<b>100-C-BR</b>	
1 1/4"	<b>125-C-AL</b> <sup>2</sup>		---		<b>125-C-BR</b> <sup>2</sup>	
1 1/2"	<b>150-C-AL</b>		<b>150-C-ALH</b>		<b>150-C-BR</b>	
2"	<b>200-C-AL</b>		<b>200-C-ALH</b>		<b>200-C-BR</b>	
2 1/2"	<b>250-C-AL</b> <sup>2</sup>		---		<b>250-C-BR</b> <sup>2</sup>	
3"	<b>300-C-AL</b>		<b>300-C-ALH</b>		<b>300-C-BR</b>	
4"	<b>400-C-AL</b>		<b>400-C-ALH</b>		<b>400-C-BR</b>	
5"	<b>500-C-AL</b>		---		---	
6"	<b>600-C-AL</b>		<b>600-C-ALH</b>		<b>600-C-BR</b>	
8"	<b>800-C-AL</b> <sup>1</sup>		---		---	

## Boss-Lock Type C Couplers



female coupler x hose shank

Size	356T6 Aluminum		Brass	
	Part #		Part #	
3/4" x 1/2"	---		---	
3/4"	<b>AC075</b>		<b>BC075</b>	
1"	<b>AC100</b>		<b>BC100</b>	
1 1/4"	<b>AC125</b>		<b>BC125</b>	
1 1/2"	<b>AC150</b>		<b>BC150</b>	
2"	<b>AC200</b>		<b>BC200</b>	
2 1/2"	<b>AC250</b>		<b>BC250</b>	
3"	<b>AC300</b>		<b>BC300</b>	
4"	<b>AC400</b>		<b>BC400</b>	
6"	<b>AC600</b>		<b>BC600</b>	
8"	<b>AC800</b> <sup>1</sup>		---	

## EZ Boss-Lock Type C Couplers



female coupler x hose shank

Size	356T6 Aluminum		Brass	
	Part #		Part #	
3/4" x 1/2"	---		---	
3/4"	<b>AC075EZ</b>		<b>BC075EZ</b>	
1"	<b>AC100EZ</b>		<b>BC100EZ</b>	
1 1/4"	---		<b>BC125EZ</b>	
1 1/2"	<b>AC150EZ</b>		<b>BC150EZ</b>	
2"	<b>AC200EZ</b>		<b>BC200EZ</b>	
2 1/2"	<b>AC250EZ</b>		---	
3"	<b>AC300EZ</b>		<b>BC300EZ</b>	
4"	<b>AC400EZ</b>		<b>BC400EZ</b>	
6"	<b>AC600EZ</b>		---	
8"	<b>AC800EZ</b> <sup>1</sup>		---	

Cam & Groove Fittings

## Dixon Type D Couplers



female coupler x female NPT

Size	356T6 Aluminum		Aluminum Hard Coat		Brass	
	Part #	Part #	Part #	Part #	Part #	Part #
½"	<b>50-D-AL</b>	---	---	---	<b>50-D-BR</b>	---
¾"	<b>75-D-AL</b>	---	---	---	<b>75-D-BR</b>	---
1"	<b>100-D-AL</b>	---	---	---	<b>100-D-BR</b>	---
1¼"	<b>125-D-AL<sup>2</sup></b>	---	---	---	<b>125-D-BR<sup>2</sup></b>	---
1½"	<b>150-D-AL</b>	---	<b>150-D-ALH</b>	---	<b>150-D-BR</b>	---
2"	<b>200-D-AL</b>	---	<b>200-D-ALH</b>	---	<b>200-D-BR</b>	---
2½"	<b>250-D-AL<sup>2</sup></b>	---	---	---	<b>250-D-BR<sup>2</sup></b>	---
3"	<b>300-D-AL</b>	---	<b>300-D-ALH</b>	---	<b>300-D-BR</b>	---
4"	<b>400-D-AL</b>	---	<b>400-D-ALH</b>	---	<b>400-D-BR</b>	---
5"	<b>500-D-AL</b>	---	---	---	<b>500-D-BR</b>	---
6"	<b>600-D-AL</b>	---	<b>600-D-ALH</b>	---	<b>600-D-BR</b>	---
8"	<b>800-D-AL<sup>1</sup></b>	---	---	---	---	---

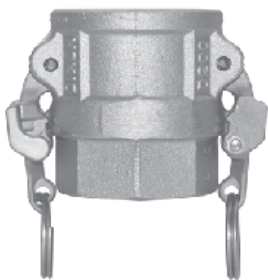
## Boss-Lock Type D Couplers



female coupler x female NPT

Size	356T6 Aluminum		Brass	
	Part #	Part #	Part #	Part #
¾"	<b>AD050</b>	---	<b>BD050</b>	---
1"	<b>AD075</b>	---	<b>BD075</b>	---
1¼"	<b>AD100</b>	---	<b>BD100</b>	---
1½"	<b>AD125</b>	---	<b>BD125</b>	---
1½"	<b>AD150</b>	---	<b>BD150</b>	---
2"	<b>AD200</b>	---	<b>BD200</b>	---
2½"	<b>AD250</b>	---	<b>BD250</b>	---
3"	<b>AD300</b>	---	<b>BD300</b>	---
4"	<b>AD400</b>	---	<b>BD400</b>	---
5"	<b>AD500</b>	---	---	---
6"	<b>AD600</b>	---	<b>BD600</b>	---
8"	<b>AD800<sup>1</sup></b>	---	---	---

## EZ Boss-Lock Type D Couplers



female coupler x female NPT

Size	356T6 Aluminum		Brass	
	Part #	Part #	Part #	Part #
¾" x ½"	---	---	---	---
¾"	<b>AD075EZ</b>	---	<b>BD075EZ</b>	---
1"	<b>AD100EZ</b>	---	<b>BD100EZ</b>	---
1¼"	---	---	<b>BD125EZ</b>	---
1½"	<b>AD150EZ</b>	---	<b>BD150EZ</b>	---
2"	<b>AD200EZ</b>	---	<b>BD200EZ</b>	---
2½"	<b>AD250EZ</b>	---	<b>BD250EZ</b>	---
3"	<b>AD300EZ</b>	---	<b>BD300EZ</b>	---
4"	<b>AD400EZ</b>	---	<b>BD400EZ</b>	---
5"	<b>AD500EZ</b>	---	---	---
6"	<b>AD600EZ</b>	---	---	---
8"	<b>AD800EZ<sup>1</sup></b>	---	---	---



## Dixon / Boss-Lock Type F Adapters



Size	356T6 Aluminum Part #	Aluminum Hard Coat Part #	Brass Part #	Unplated Mall. Iron Part #	Plated Mall. Iron Part #	316 Stain. Steel Part #
1/2"	<b>50-F-AL</b>	---	<b>50-F-BR</b>	---	---	<b>50-F-SS</b>
3/4" x 1/2"	<b>7550-F-AL</b>	---	<b>7550-F-BR</b>	---	---	<b>7550-F-SS</b>
3/4"	<b>75-F-AL</b>	---	<b>75-F-BR</b>	---	<b>75-F-PM</b>	<b>75-F-SS</b>
1"	<b>100-F-AL</b>	---	<b>100-F-BR</b>	---	<b>100-F-PM</b>	<b>100-F-SS</b>
1 1/4"	<b>125-F-AL</b>	---	<b>125-F-BR</b>	---	---	<b>125-F-SS</b>
1 1/2"	<b>150-F-AL</b>	<b>150-F-ALH</b>	<b>150-F-BR</b>	<b>150-F-MI</b>	<b>150-F-PM</b>	<b>150-F-SS</b>
2"	<b>200-F-AL</b>	<b>200-F-ALH</b>	<b>200-F-BR</b>	<b>200-F-MI</b>	<b>200-F-PM</b>	<b>200-F-SS</b>
2 1/2"	<b>250-F-AL</b>	---	<b>250-F-BR</b>	---	---	<b>250-F-SS</b>
3"	<b>300-F-AL</b>	<b>300-F-ALH</b>	<b>300-F-BR</b>	<b>300-F-MI</b>	<b>300-F-PM</b>	<b>300-F-SS</b>
4"	<b>400-F-AL</b>	<b>400-F-ALH</b>	<b>400-F-BR</b>	<b>400-F-MI</b>	<b>400-F-PM</b>	<b>400-F-SS</b>
5"	<b>500-F-AL</b>	---	---	---	<b>600-F-PM</b>	<b>600-F-SS</b>
6"	<b>600-F-AL</b>	<b>600-F-ALH</b>	<b>600-F-BR</b>	---	---	---
8" DIX	<b>800-F-AL</b> <sup>1</sup>	---	---	---	---	---
8" BL	<b>801-F-AL</b> <sup>1</sup>	---	---	---	---	---

## Dixon / Boss-Lock Type DP Plugs



Size	356T6 Aluminum Part #	Aluminum Hard Coat Part #	Brass Part #	Unplated Mall. Iron Part #	Plated Mall. Iron Part #	316 Stain. Steel Part #
1/2"	---	---	<b>50-DP-BR</b>	---	---	<b>50-DP-SS</b>
3/4"	<b>75-DP-AL</b>	---	<b>75-DP-BR</b>	---	---	<b>75-DP-SS</b>
1"	<b>100-DP-AL</b>	---	<b>100-DP-BR</b>	---	<b>100-DP-PM</b>	<b>100-DP-SS</b>
1 1/4"	<b>125-DP-AL</b>	---	<b>125-DP-BR</b>	---	<b>125-DP-PM</b>	<b>125-DP-SS</b>
1 1/2"	<b>150-DP-AL</b>	<b>150-DP-ALH</b>	<b>150-DP-BR</b>	<b>150-DP-MI</b>	<b>150-DP-PM</b>	<b>150-DP-SS</b>
2"	<b>200-DP-AL</b>	<b>200-DP-ALH</b>	<b>200-DP-BR</b>	<b>200-DP-MI</b>	<b>200-DP-PM</b>	<b>200-DP-SS</b>
2 1/2"	<b>250-DP-AL</b>	---	---	---	<b>250-DP-PM</b>	<b>250-DP-SS</b>
3"	<b>300-DP-AL</b>	<b>300-DP-ALH</b>	<b>300-DP-BR</b>	<b>300-DP-MI</b>	<b>300-DP-PM</b>	<b>300-DP-SS</b>
4"	<b>400-DP-AL</b>	<b>400-DP-ALH</b>	<b>400-DP-BR</b>	<b>400-DP-MI</b>	<b>400-DP-PM</b>	<b>400-DP-SS</b>
5"	<b>500-DP-AL</b>	---	---	---	---	---
6"	<b>600-DP-AL</b>	<b>600-DP-ALH</b>	<b>600-DP-BR</b>	---	---	<b>600-DP-SS</b>
8" DIX	<b>800-DP-AL</b> <sup>1</sup>	---	---	---	---	---
8" BL	<b>801-DP-AL</b> <sup>1</sup>	---	---	---	---	---